





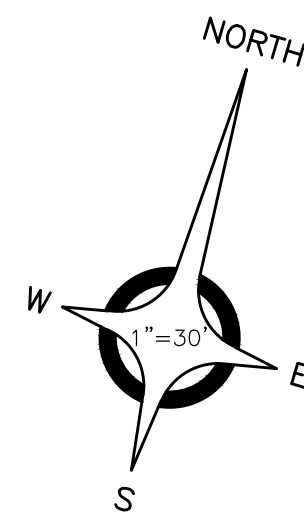
ANDERSON, ECKSTEIN AND WESTRICK, INC.

CIVIL ENGINEERS SURVEYORS ARCHITECTS

51301 Schoenherr Road Phone 586 726 1234  
Shelby Township Fax 586 726 8780  
Michigan 48315

www.aewinc.com

ENGINEERING STRONG COMMUNITIES

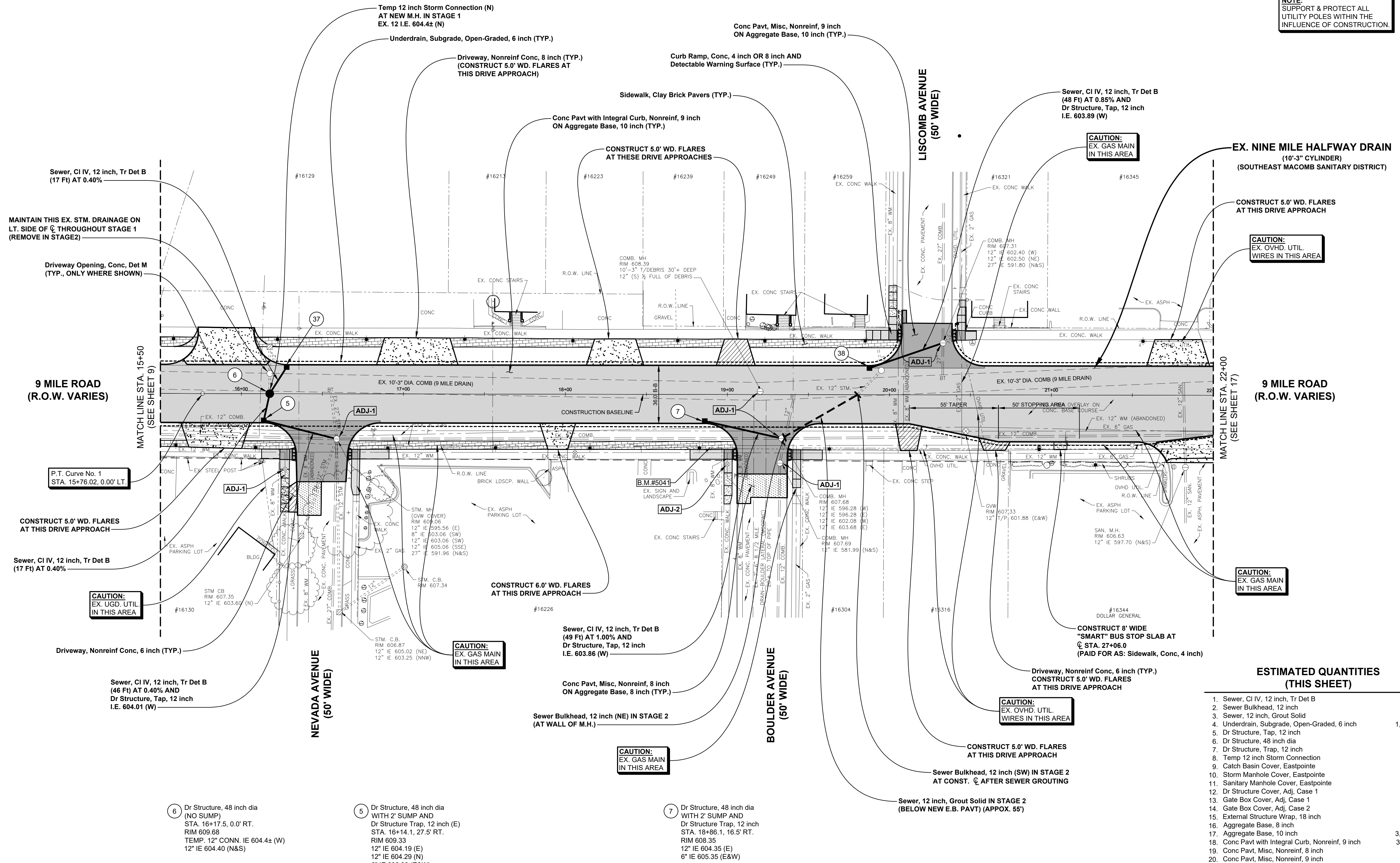


18+50.8 4" STEEL POST 40.1'  
18+51.2 4" STEEL POST 39.1'  
18+51.8 LIGHT POLE 33.7'  
18+11.5 SERVICE POINT 53.1'  
18+11.4 ROAD CB 28.9'  
18+22.3 LIGHT POLE 33.5'  
18+32.5 SERVICE POINT 42.3'  
18+77.1 LIGHT POLE 33.6'  
17+47.8 LIGHT POLE 33.8'  
17+56.1 SERVICE POINT 39.4'  
17+56.2 4" STEEL POST 39.5'  
18+44.6 LIGHT POLE 32.9'  
18+49.3 LIGHT POLE 33.2'  
18+49.3 SERVICE POINT 40.4'  
18+13.2 ROAD CB 27.8'  
18+13.2 ROAD CB 27.8'  
18+15.5 SERVICE POINT 40.4'  
20+02.3 WALK BOX 59.0'  
20+02.3 SERVICE POINT 59.0'  
20+02.3 LIGHT POLE 59.0'  
20+13.3 COMB. MH 32.0'  
20+13.3 SERVICE POINT 46.7'  
20+13.3 SERVICE POINT 46.7'  
20+13.3 SERVICE POINT 46.7'  
20+13.3 SERVICE POINT 46.7'  
20+13.3 SERVICE POINT 46.7'  
21+46.8 SERVICE POINT 41.1'  
21+46.8 SERVICE POINT 41.1'

37 Dr Structure, 48 inch dia WITH 2' SUMP STA. 16+27.9, 16.5' LT. RIM 609.28 12" IE 604.51 (S) 6" IE 606.28 (E&W)

38 Dr Structure, 48 inch dia WITH 2' SUMP AND Dr Structure Trap, 12 inch STA. 19+87.7, 16.5' LT. RIM 607.80 12" IE 604.30 (E) 6" IE 604.80 (E&W)

NOTE: SUPPORT & PROTECT ALL UTILITY POLES WITHIN THE INFLUENCE OF CONSTRUCTION



Sewer, CI IV, 12 inch, Tr Det B (17 Ft) AT 0.40%

MAINTAIN THIS EX. STM. DRAINAGE ON LT. SIDE OF C THROUGHOUT STAGE 1 (REMOVE IN STAGE 2)

Driveway Opening, Conc, Det M (TYP., ONLY WHERE SHOWN)

9 MILE ROAD (R.O.W. VARIES)

P.T. Curve No. 1 STA. 15+76.02, 0.00' LT.

CONSTRUCT 5.0' WD. FLARES AT THIS DRIVE APPROACH

Sewer, CI IV, 12 inch, Tr Det B (17 Ft) AT 0.40%

CAUTION: EX. UGD. UTIL. IN THIS AREA

Driveway, Nonreinf Conc, 6 inch (TYP.)

Sewer, CI IV, 12 inch, Tr Det B (46 Ft) AT 0.40% AND Dr Structure, Tap, 12 inch I.E. 604.01 (W)

6 Dr Structure, 48 inch dia (NO SUMP) STA. 16+17.5, 0.0' RT. RIM 609.68 TEMP. 12" CONN. IE 604.44 (W) 12" IE 604.40 (N&S)

5 Dr Structure, 48 inch dia WITH 2' SUMP AND Dr Structure Trap, 12 inch (E) STA. 16+14.1, 27.5' RT. RIM 609.33 12" IE 604.19 (E) 12" IE 604.29 (N) 6" IE 606.33 (E&W)

7 Dr Structure, 48 inch dia WITH 2' SUMP AND Dr Structure Trap, 12 inch STA. 18+86.1, 16.5' RT. RIM 608.35 12" IE 604.35 (E) 6" IE 605.35 (E&W)

CONSTRUCT 6.0' WD. FLARES AT THIS DRIVE APPROACH

CAUTION: EX. GAS MAIN IN THIS AREA

Sewer, CI IV, 12 inch, Tr Det B (49 Ft) AT 1.00% AND Dr Structure, Tap, 12 inch I.E. 603.86 (W)

Conc Pavt, Misc, Nonreinf, 8 inch ON Aggregate Base, 8 inch (TYP.)

Sewer Bulkhead, 12 inch (NE) IN STAGE 2 (AT WALL OF M.H.)

CAUTION: EX. GAS MAIN IN THIS AREA

Conc Pavt, Misc, Nonreinf, 9 inch ON Aggregate Base, 10 inch (TYP.)

Driveway, Nonreinf Conc, 8 inch (TYP.) (CONSTRUCT 5.0' WD. FLARES AT THIS DRIVE APPROACH)

Conc Pavt with Integral Curb, Nonreinf, 9 inch ON Aggregate Base, 10 inch (TYP.)

CONSTRUCT 5.0' WD. FLARES AT THESE DRIVE APPROACHES

Sidewalk, Clay Brick Pavers (TYP.)

CONSTRUCT 5.0' WD. FLARES AT THIS DRIVE APPROACH

CONC. M.H. RIM 608.39 10'-3" T/DEBRIS 30" DEEP 12" (S) 1/2 FULL OF DEBRIS

CONSTRUCT 5.0' WD. FLARES AT THIS DRIVE APPROACH

CONSTRUCTION BASELINE

CONSTRUCT 8' WIDE "SMART" BUS STOP SLAB AT STA. 27+06.0 (PAID FOR AS: Sidewalk, Conc, 4 inch)

CONSTRUCT 5.0' WD. FLARES AT THIS DRIVE APPROACH

CONSTRUCT 5.0' WD. FLARES AT THIS DRIVE APPROACH

CONSTRUCT 5.0' WD. FLARES AT THIS DRIVE APPROACH

CONSTRUCT 5.0' WD. FLARES AT THIS DRIVE APPROACH

CONSTRUCT 5.0' WD. FLARES AT THIS DRIVE APPROACH

CONSTRUCT 5.0' WD. FLARES AT THIS DRIVE APPROACH

CONSTRUCT 5.0' WD. FLARES AT THIS DRIVE APPROACH

CONSTRUCT 5.0' WD. FLARES AT THIS DRIVE APPROACH

CONSTRUCT 5.0' WD. FLARES AT THIS DRIVE APPROACH

CONSTRUCT 5.0' WD. FLARES AT THIS DRIVE APPROACH

CONSTRUCT 5.0' WD. FLARES AT THIS DRIVE APPROACH

CONSTRUCT 5.0' WD. FLARES AT THIS DRIVE APPROACH

CONSTRUCT 5.0' WD. FLARES AT THIS DRIVE APPROACH

ESTIMATED QUANTITIES (THIS SHEET)

Table with 2 columns: Item description and Quantity. Includes items like Sewer, CI IV, 12 inch, Tr Det B (177 Ft), Sewer Bulkhead, 12 inch (2 Ea), Underdrain, Subgrade, Open-Graded, 6 inch (55 Ft), etc.

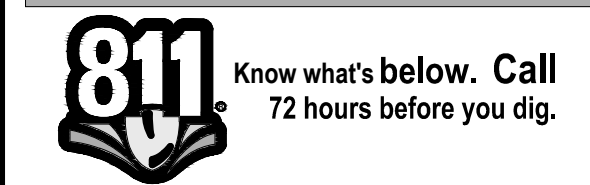
Table with 2 columns: DATE and SUBMITTALS/REVISIONS. Includes project name: 9 MILE ROAD PAVEMENT RECONSTRUCTION N.B. GRATIOT (M-3) TO TUSCANY AVE.

CONSTRUCTION PLAN STA. 15+50 TO STA. 22+00

CONSTRUCTION PLAN STA. 15+50 TO STA. 22+00

CITY OF EASTPOINTE

Legend table with columns: DRAWN BY, CHECKED BY, DATE. Includes scale: 1" = 30'.



UTILITY INFORMATION, AS SHOWN, INDICATES APPROXIMATE LOCATIONS AND TYPES OF EXISTING FACILITIES ONLY. AS DISCLOSED BY RECORDS PROVIDED TO THIS FIRM FROM THE VARIOUS UTILITY COMPANIES. NO GUARANTEE IS GIVEN OR IMPLIED AS TO THE COMPLETENESS OR ACCURACY THEREOF.

PRIOR TO CONSTRUCTION, ALL LOCATIONS AND DEPTHS OF EXISTING OVERHEAD AND UNDERGROUND UTILITIES (IN CONFLICT WITH THE CONSTRUCTION OF THESE PROPOSED IMPROVEMENTS) SHALL BE VERIFIED IN THE FIELD. DURING THE CONSTRUCTION, THE CONTRACTOR SHALL PROTECT AND SUPPORT ALL UTILITIES THAT ARE ENCOUNTERED. (ALL COSTS FOR UTILITY LOCATION VERIFICATION, SUPPORT AND PROTECTION SHALL BE INCLUDED IN THE PROPOSED PAY ITEM CONFLICTING WITH THAT UTILITY).

DURING CONSTRUCTION, THE CONTRACTOR SHALL USE EXTREME CAUTION WHEN OPERATING NEAR ANY AND ALL OVERHEAD AND / OR BURIED UTILITIES.

PROJECT NO. 0145-0645

13, Const 2-26/2024 11:51:59 AM

SHEET NO. 13







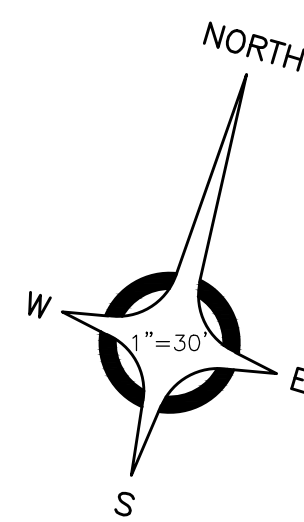
ANDERSON, ECKSTEIN AND WESTRICK, INC.

CIVIL ENGINEERS SURVEYORS ARCHITECTS

51301 Schoenherr Road Phone 586 726 1234  
Shelby Township Michigan 48315 Fax 586 726 8780

www.aewinc.com

ENGINEERING STRONG COMMUNITIES



BENCHMARK NO. 5047  
FOUND MAG NAIL SOUTH  
FACE UTILITY POLE WITH  
LITE, NORTH SIDE 9 MILE @  
#17207, 115± EAST OF  
RAUSCH  
ELEVATION: 602.84 (NAVD 88)

45+52.3 PARKING BLOCKS 1 40.5'  
45+52.3 3" STEEL POST 40.5'

45+93.2 3" STEEL POST 40.5'  
45+93.2 STORM MH 18.2'  
46+03.6 UP W/DRIFT 32.5'

47+48.6 UP W/DRIFT 32.7'  
47+52.8 PARKING BLOCKS 1 40.5'  
47+52.8 3" STEEL POST 40.5'  
47+59.1 STORM MH 2.7'

47+86.2 2" DIA BUSH 0.5'  
47+86.2 3" DIA BUSH 0.5'  
47+86.2 4" DIA BUSH 0.5'  
47+86.2 6" DIA BUSH 0.5'  
47+86.2 8" DIA BUSH 0.5'  
47+86.2 10" DIA BUSH 0.5'  
47+86.2 12" DIA BUSH 0.5'  
47+86.2 14" DIA BUSH 0.5'  
47+86.2 16" DIA BUSH 0.5'  
47+86.2 18" DIA BUSH 0.5'  
47+86.2 20" DIA BUSH 0.5'

48+94.4 SERVICEHOFF 43.4'

49+22.1 UP W/DRIFT 32.7'

49+46.1 50A-POST MOUNT 50.6'

49+82.4 6" DEBRIS 4.48'

49+85 50B-POST MOUNT 42.8'

50+87.9 STORM CB 9.7'

50+99.8 UP W/DRIFT 32.7'

50+99.8 3" DIA BUSH 0.5'

51+15.4 2" DIA BUSH 0.5'

51+15.4 3" DIA BUSH 0.5'

51+15.4 4" DIA BUSH 0.5'

51+15.4 6" DIA BUSH 0.5'

51+15.4 8" DIA BUSH 0.5'

51+15.4 10" DIA BUSH 0.5'

51+15.4 12" DIA BUSH 0.5'

51+15.4 14" DIA BUSH 0.5'

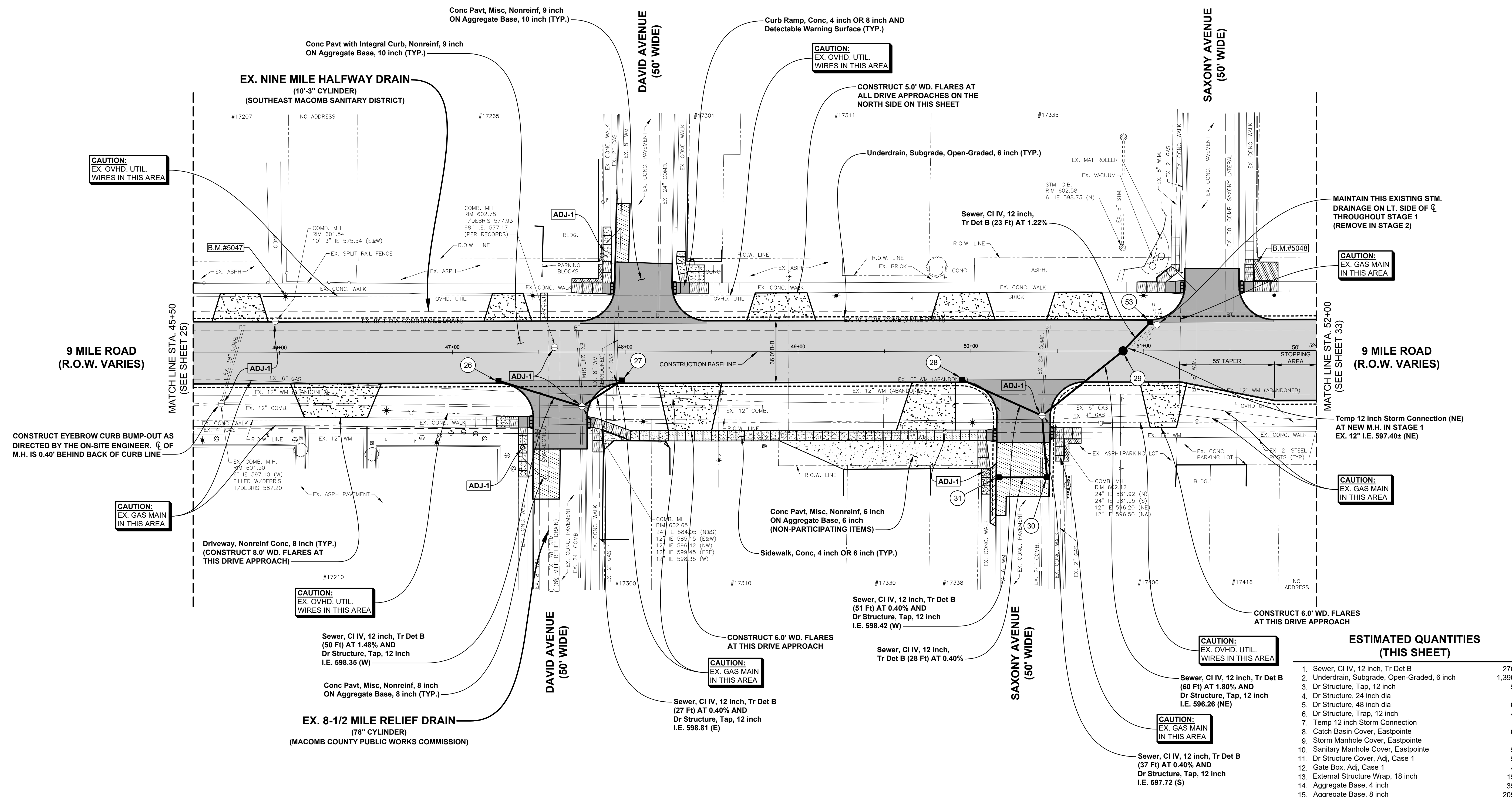
51+15.4 16" DIA BUSH 0.5'

51+15.4 18" DIA BUSH 0.5'

51+15.4 20" DIA BUSH 0.5'

53 Dr Structure, 48 inch dia  
WITH 2' SUMP  
STA. 51+03.8, 16.5' RT.  
RIM 602.12  
12" IE 597.62 (SW)  
6" IE 599.12 (E&W)

NOTE:  
SUPPORT & PROTECT ALL  
UTILITY POLES WITHIN THE  
INFLUENCE OF CONSTRUCTION



CAUTION:  
EX. OVHD. UTIL.  
WIRES IN THIS AREA

CAUTION:  
EX. OVHD. UTIL.  
WIRES IN THIS AREA

CAUTION:  
EX. GAS MAIN  
IN THIS AREA

CAUTION:  
EX. GAS MAIN  
IN THIS AREA

CAUTION:  
EX. OVHD. UTIL.  
WIRES IN THIS AREA

CAUTION:  
EX. GAS MAIN  
IN THIS AREA

CAUTION:  
EX. OVHD. UTIL.  
WIRES IN THIS AREA

CAUTION:  
EX. GAS MAIN  
IN THIS AREA

CAUTION:  
EX. GAS MAIN  
IN THIS AREA

CONSTRUCT EYEBROW CURB BUMP-OUT AS  
DIRECTED BY THE ON-SITE ENGINEER. C OF  
M.H. IS 0.40' BEHIND BACK OF CURB LINE

Driveway, Nonreinf Conc, 8 inch (TYP.)  
(CONSTRUCT 8.0' WD. FLARES AT  
THIS DRIVE APPROACH)

Conc Pavt, Misc, Nonreinf, 6 inch  
ON Aggregate Base, 6 inch  
(NON-PARTICIPATING ITEMS)

CONSTRUCT 6.0' WD. FLARES  
AT THIS DRIVE APPROACH

Sewer, CI IV, 12 inch, Tr Det B  
(50 Ft) AT 1.48% AND  
Dr Structure, Tap, 12 inch  
I.E. 598.35 (W)

Sewer, CI IV, 12 inch, Tr Det B  
(28 Ft) AT 0.40% AND  
Dr Structure, Tap, 12 inch  
I.E. 598.42 (W)

Sewer, CI IV, 12 inch, Tr Det B  
(37 Ft) AT 0.40% AND  
Dr Structure, Tap, 12 inch  
I.E. 597.72 (S)

Sewer, CI IV, 12 inch, Tr Det B  
(60 Ft) AT 1.80% AND  
Dr Structure, Tap, 12 inch  
I.E. 596.26 (NE)

26 Dr Structure, 48 inch dia  
WITH 2' SUMP AND  
Dr Structure Trap, 12 inch  
STA. 47+26.7, 16.5' RT.  
RIM 602.59  
12" IE 599.09 (E)  
6" IE 599.59 (E&W)

27 Dr Structure, 48 inch dia  
WITH 2' SUMP AND  
Dr Structure Trap, 12 inch  
STA. 47+97.9, 16.5' RT.  
RIM 602.92  
12" IE 598.92 (W)  
6" IE 599.92 (E&W)

28 Dr Structure, 48 inch dia  
WITH 2' SUMP AND  
Dr Structure Trap, 12 inch  
STA. 49+94.8, 16.5' RT.  
RIM 602.62  
12" IE 598.62 (E)  
6" IE 599.62 (E&W)

31 Dr Structure, 24 inch dia  
(NO SUMP)  
STA. 50+15.9, 73.0' RT.  
RIM 601.58  
12" IE 597.58 (E)  
6" IE 598.58 (N&S)

30 Dr Structure, 48 inch dia  
WITH 2' SUMP AND  
Dr Structure Trap, 12 inch (N)  
STA. 50+43.9, 73.0' RT.  
RIM 601.54  
12" IE 597.47 (W)  
12" IE 597.37 (N)  
6" IE 598.54 (N&S)

29 Dr Structure, 48 inch dia  
(NO SUMP)  
STA. 55+88.0, 0.0' RT.  
RIM 602.62  
TEMP. 12" CONN. IE 597.40± (NE)  
12" IE 597.34 (SW&NE)

ESTIMATED QUANTITIES (THIS SHEET)

1. Sewer, CI IV, 12 inch, Tr Det B	276 Ft
2. Underdrain, Subgrade, Open-Graded, 6 inch	1,390 Ft
3. Dr Structure, Tap, 12 inch	5 Ea
4. Dr Structure, 24 inch dia	1 Ea
5. Dr Structure, 48 inch dia	6 Ea
6. Dr Structure, Trap, 12 inch	4 Ea
7. Temp 12 inch Storm Connection	1 Ea
8. Catch Basin Cover, Eastpointe	6 Ea
9. Storm Manhole Cover, Eastpointe	1 Ea
10. Sanitary Manhole Cover, Eastpointe	5 Ea
11. Dr Structure Cover, Adj, Case 1	4 Ea
12. Gate Box, Adj, Case 1	1 Ea
13. External Structure Wrap, 18 inch	15 Ea
14. Aggregate Base, 4 inch	35 Syd
15. Aggregate Base, 8 inch	209 Syd
16. Aggregate Base, 10 inch	3,372 Syd
17. HMA Surface, 4 inch	8 Ton
18. Conc Pavt with Integral Curb, Nonreinf, 9 inch	2,615 Syd
19. Conc Pavt, Misc, Nonreinf, 8 inch	194 Syd
20. Conc Pavt, Misc, Nonreinf, 9 inch	604 Syd
21. Driveway, Nonreinf Conc, 8 inch	611 Syd
22. Curb Ramp Opening, Conc	72 Ft
23. Curb Ramp, Conc, 4 inch	1,177 Sft
24. Curb Ramp, Conc, 8 inch	378 Sft
25. Detectable Warning Surface	48 Ft
26. Sidewalk, Conc, 4 inch	938 Sft
27. Sidewalk, Conc, 6 inch	792 Sft
28. Station Grading	6.5 Sta

ESTIMATED NON-PARTICIPATING QUANTITIES (THIS SHEET)

1. Aggregate Base, 6 inch	176 Syd
2. Conc Pavt, Misc, Nonreinf, 6 inch	176 Syd

DATE SUBMITTALS/REVISIONS

DATE	SUBMITTALS/REVISIONS

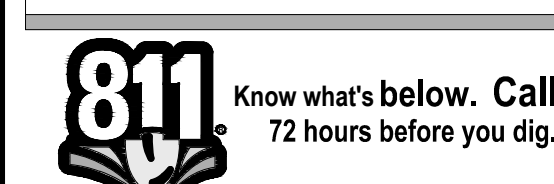
PROJECT NAME:  
**9 MILE ROAD PAVEMENT RECONSTRUCTION**  
N.B. GRATIOT (M-3) TO TUSCANY AVE.

SHEET TITLE:  
**CONSTRUCTION PLAN**  
STA. 45+50 TO STA. 52+00

CLIENT:  
CITY OF EASTPOINTE

Legend and Scale

PRELIMINARY	CONSTRUCTION	RECORD
DRAWN BY: MJS	CHECKED BY: RRR	DATE: MAY 2023
SCALE: 1" = 30'		



UTILITY INFORMATION, AS SHOWN, INDICATES APPROXIMATE LOCATIONS AND TYPES OF EXISTING FACILITIES ONLY. AS DISCLOSED BY RECORDS PROVIDED TO THIS FIRM FROM THE VARIOUS UTILITY COMPANIES. NO GUARANTEE IS GIVEN OR IMPLIED AS TO THE COMPLETENESS OR ACCURACY THEREOF.

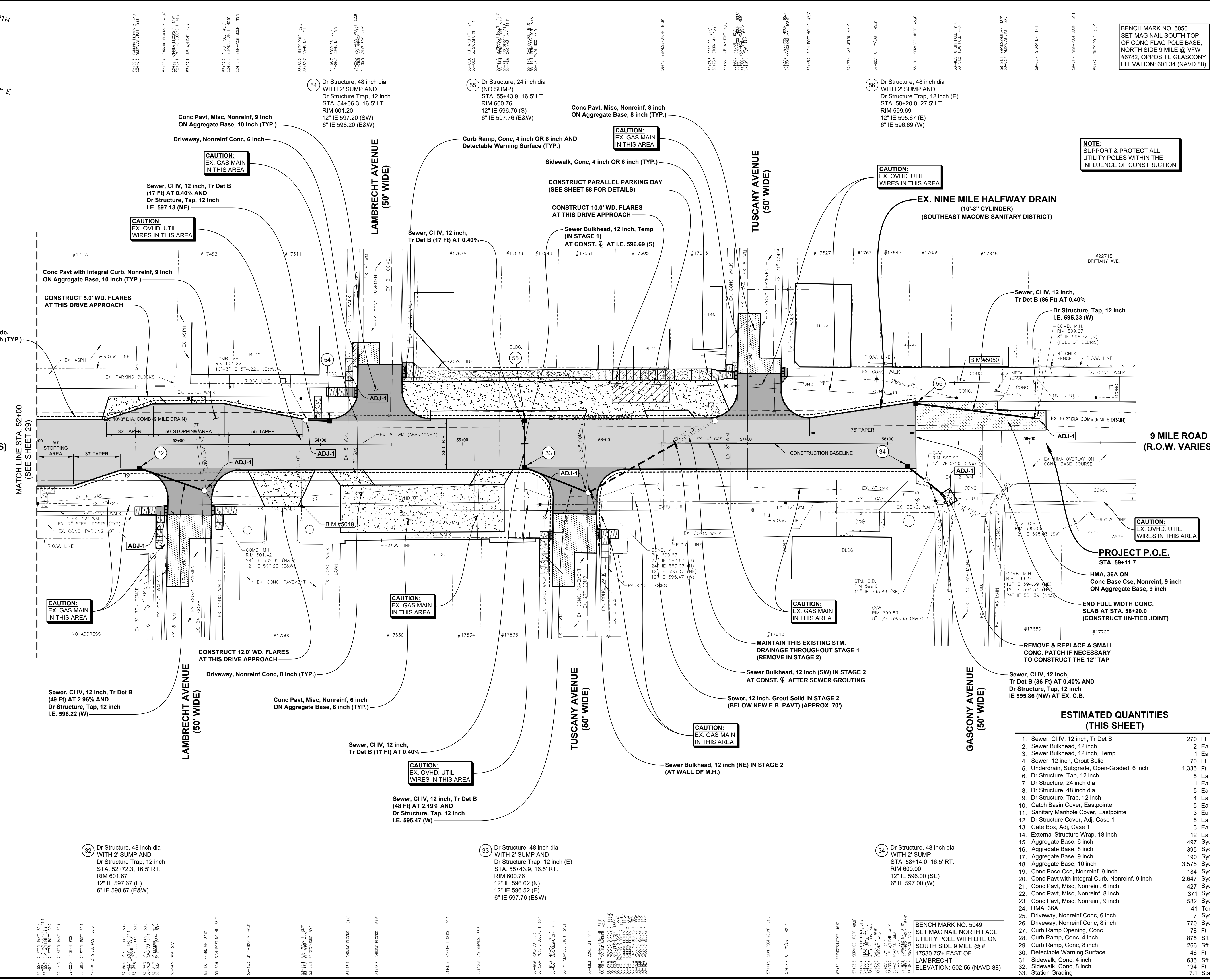
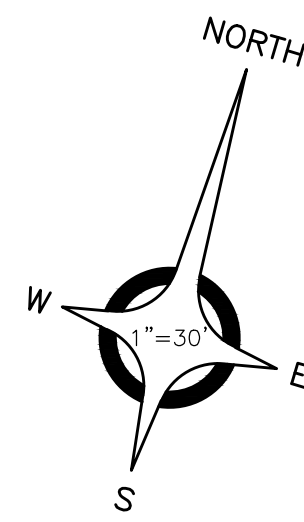
PRIOR TO CONSTRUCTION, ALL LOCATIONS AND DEPTHS OF EXISTING OVERHEAD AND UNDERGROUND UTILITIES (IN CONFLICT WITH THE CONSTRUCTION OF THESE PROPOSED IMPROVEMENTS) SHALL BE VERIFIED IN THE FIELD. DURING THE CONSTRUCTION, THE CONTRACTOR SHALL PROTECT AND SUPPORT ALL UTILITIES THAT ARE ENCOUNTERED. (ALL COSTS FOR UTILITY LOCATION VERIFICATION, SUPPORT AND PROTECTION SHALL BE INCLUDED IN THE PROPOSED PAY ITEM CONFLICTING WITH THAT UTILITY).

DURING CONSTRUCTION, THE CONTRACTOR SHALL USE EXTREME CAUTION WHEN OPERATING NEAR ANY AND ALL OVERHEAD AND / OR BURIED UTILITIES.

PROJECT NO. 0145-0645

M:\0145\0645\0645\PAVING PLAN\TEMP - ROAD DETAIL\_31\_CONJ.DWG  
28\_Const 6-1-23\2024 4:05:25 PM

SHEET NO.



BENCH MARK NO. 5050  
SET MAG NAIL SOUTH TOP  
OF CONC FLAG POLE BASE,  
NORTH SIDE 9 MILE @ VW  
#6782, OPPOSITE GLASCONY  
ELEVATION: 601.34 (NAVD 88)

**NOTE:**  
SUPPORT & PROTECT ALL  
UTILITY POLES WITHIN THE  
INFLUENCE OF CONSTRUCTION

**ANDERSON, ECKSTEIN AND WESTRICK, INC.**  
CIVIL ENGINEERS SURVEYORS ARCHITECTS  
51301 Schoenherr Road Phone 586 726 1234  
Shelby Township Fax 586 726 8780  
Michigan 48315  
www.aewinc.com  
ENGINEERING STRONG COMMUNITIES

DATE	SUBMITTALS/REVISIONS
PROJECT NAME:	9 MILE ROAD PAVEMENT RECONSTRUCTION N.B. GRATIOT (M-3) TO TUSCANY AVE.
SHEET TITLE:	CONSTRUCTION PLAN STA. 52+00 TO GASCONY
CLIENT:	CITY OF EASTPOINTE

**CONSTRUCTION PLAN**  
STA. 52+00 TO GASCONY

LEGEND:  
 PRELIMINARY     CONSTRUCTION     RECORD  
 DRAWN BY: MJS    CHECKED BY: RRR    DATE: MAY 2023  
 SCALE: 1" = 30'

**811** Know what's below. Call 72 hours before you dig.

UTILITY INFORMATION, AS SHOWN, INDICATES APPROXIMATE LOCATIONS AND TYPES OF EXISTING FACILITIES ONLY. AS DISCLOSED BY RECORDS PROVIDED TO THIS FIRM FROM THE VARIOUS UTILITY COMPANIES. NO GUARANTEE IS GIVEN OR IMPLIED AS TO THE COMPLETENESS OR ACCURACY THEREOF.

PRIOR TO CONSTRUCTION, ALL LOCATIONS AND DEPTHS OF EXISTING OVERHEAD AND UNDERGROUND UTILITIES (IN CONFLICT WITH THE CONSTRUCTION OF THESE PROPOSED IMPROVEMENTS) SHALL BE VERIFIED IN THE FIELD. DURING THE CONSTRUCTION, THE CONTRACTOR SHALL PROTECT AND SUPPORT ALL UTILITIES THAT ARE ENCOUNTERED. (ALL COSTS FOR UTILITY LOCATION VERIFICATION, SUPPORT AND PROTECTION SHALL BE INCLUDED IN THE PROPOSED PAY ITEM CONFLICTING WITH THAT UTILITY).

DURING CONSTRUCTION, THE CONTRACTOR SHALL USE EXTREME CAUTION WHEN OPERATING NEAR ANY AND ALL OVERHEAD AND / OR BURIED UTILITIES.

PROJECT NO. 0145-0645

M:\0145\0645\DWG\PAVING PLAN\TEMP - ROAD DET\033\_CONJ.DWG  
33\_Conj.dwg 1/23/2024 4:04:34 PM

SHEET NO. 33

Copyright, 2022, Anderson, Eckstein and Westrick, Inc.

**ESTIMATED QUANTITIES (THIS SHEET)**

1. Sewer, CI IV, 12 inch, Tr Det B	270 Ft
2. Sewer Bulkhead, 12 inch	2 Ea
3. Sewer Bulkhead, 12 inch, Temp	1 Ea
4. Sewer, 12 inch, Grout Solid	70 Ft
5. Underdrain, Subgrade, Open-Graded, 6 inch	1,335 Ft
6. Dr Structure, Tap, 12 inch	5 Ea
7. Dr Structure, 24 inch dia	1 Ea
8. Dr Structure, 48 inch dia	5 Ea
9. Dr Structure, Trap, 12 inch	4 Ea
10. Catch Basin Cover, Eastpointe	5 Ea
11. Sanitary Manhole Cover, Eastpointe	3 Ea
12. Dr Structure Cover, Adj. Case 1	5 Ea
13. Gate Box, Adj. Case 1	3 Ea
14. External Structure Wrap, 18 inch	12 Ea
15. Aggregate Base, 6 inch	497 Syd
16. Aggregate Base, 8 inch	395 Syd
17. Aggregate Base, 9 inch	190 Syd
18. Aggregate Base, 10 inch	3,575 Syd
19. Conc Base Cse, Nonreinf, 9 inch	184 Syd
20. Conc Pavt with Integral Curb, Nonreinf, 9 inch	2,647 Syd
21. Conc Pavt, Misc, Nonreinf, 6 inch	427 Syd
22. Conc Pavt, Misc, Nonreinf, 8 inch	371 Syd
23. Conc Pavt, Misc, Nonreinf, 9 inch	582 Syd
24. HMA, 36A	41 Ton
25. Driveway, Nonreinf Conc, 6 inch	7 Syd
26. Driveway, Nonreinf Conc, 8 inch	770 Syd
27. Curb Ramp Opening, Conc	78 Ft
28. Curb Ramp, Conc, 4 inch	875 Sft
29. Curb Ramp, Conc, 8 inch	266 Sft
30. Detectable Warning Surface	46 Ft
31. Sidewalk, Conc, 4 inch	635 Sft
32. Sidewalk, Conc, 8 inch	194 Ft
33. Station Grading	7.1 Sta

BENCH MARK NO. 5049  
SET MAG NAIL NORTH FACE  
UTILITY POLE WITH LITE ON  
SOUTH SIDE 9 MILE @ #  
17530 75' E EAST OF  
LAMBRECHT  
ELEVATION: 602.56 (NAVD 88)